

mondo

arc

THE INTERNATIONAL MAGAZINE FOR DESIGNERS WITH LIGHT #96 2017

DESIGNED

DESIGN ICON

NEW DESIGN MUSEUM
SHINES IN LONDON

DANIEL STROMBORG AND LAWRIE NISBET INTERVIEWED • LIGHT ART FESTIVALS
LONDON MUSEUMS • RETAIL LIGHTING • DARC ROOM • ISOTERA REVIEWED

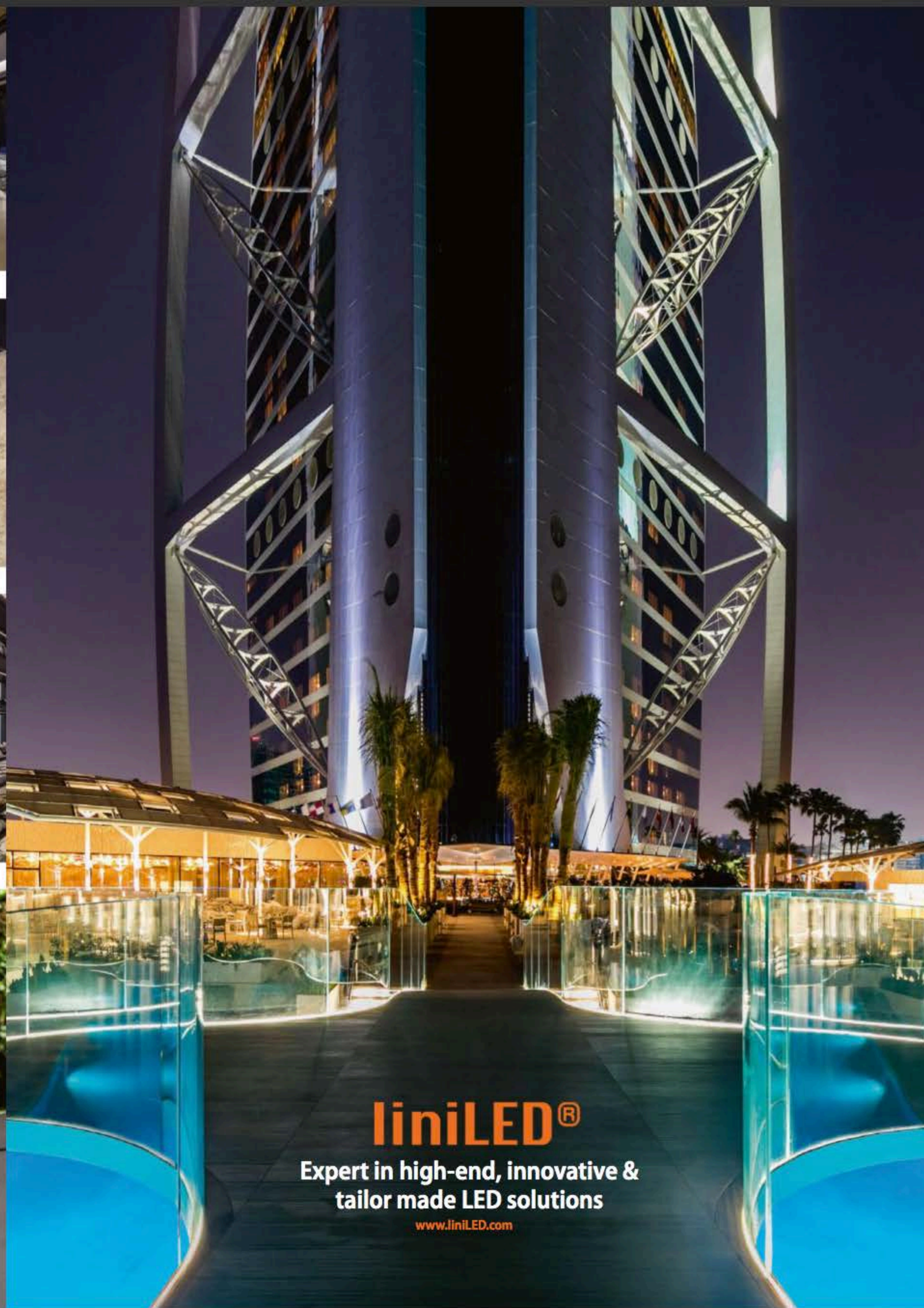
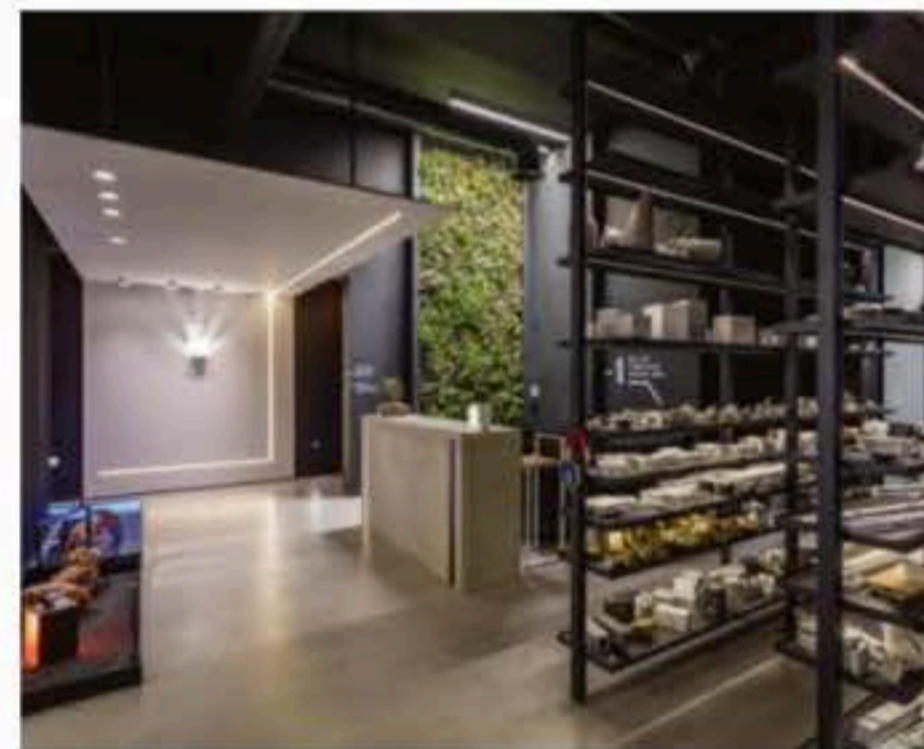
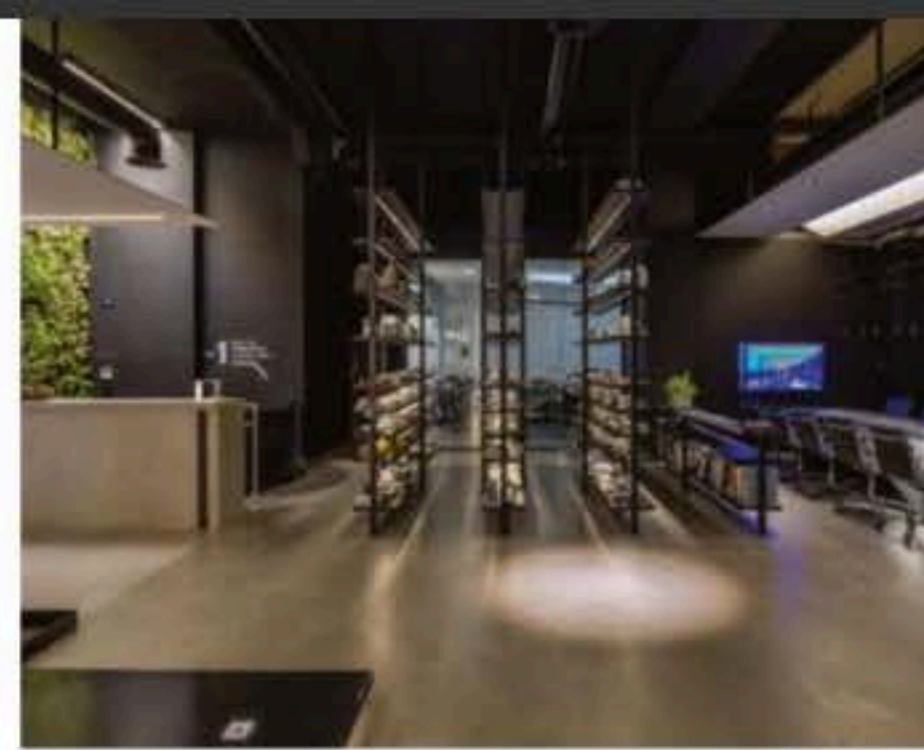
SCENIC SUGGESTION

Providing a cutting-edge lighting solution and customisation support, Linea Light's products have illuminated the IFI Group - Architectural Lighting Works' new Athens headquarters with harmonious internal and external placement.

Studio of lighting design and architecture IFI Group - Architectural Lighting Works has identified in the Linea Light Group products the ideal solutions to illuminate its new headquarters in Chalandri, a Greek town in the metropolitan area of Athens. With a long tradition dating back to 1989, created on the personal initiative of Freiderikos Anagnostakis, the IFI Group Architectural Lighting Works studio plans small, medium and large lighting projects, according to a pool of professional figures, such as architects, lighting designers and engineers. The new building, completed in 2016, is a single, compact and hermetic volume; inside, the well-defined rooms are connected to each other, characterised by spaces containing flat surfaces, shelves and geometrical forms. From the Design Area to the Showroom, from the Prototyping Zone to the Meeting Room, light becomes a determining factor to highlight full and empty spaces, volumes and materials. The enlightenment becomes an integral part of the project, from the starting concept to its application as a constitutive element of the structure, not only as a simple functional accessory, highlighting the importance of the lighting studio according to the entire architectural complex.

Thanks to Linea Light Group's solutions, which have found harmonious internal and external placement, the aim has been achieved, fully satisfying the needs of the client. An immediate scenic suggestion at the entrance of the Showroom is created by Fylo+ and Gypsum from Linea Light's Architectural Lighting collection. The essential graphic style of the first product is connected to the elegance of

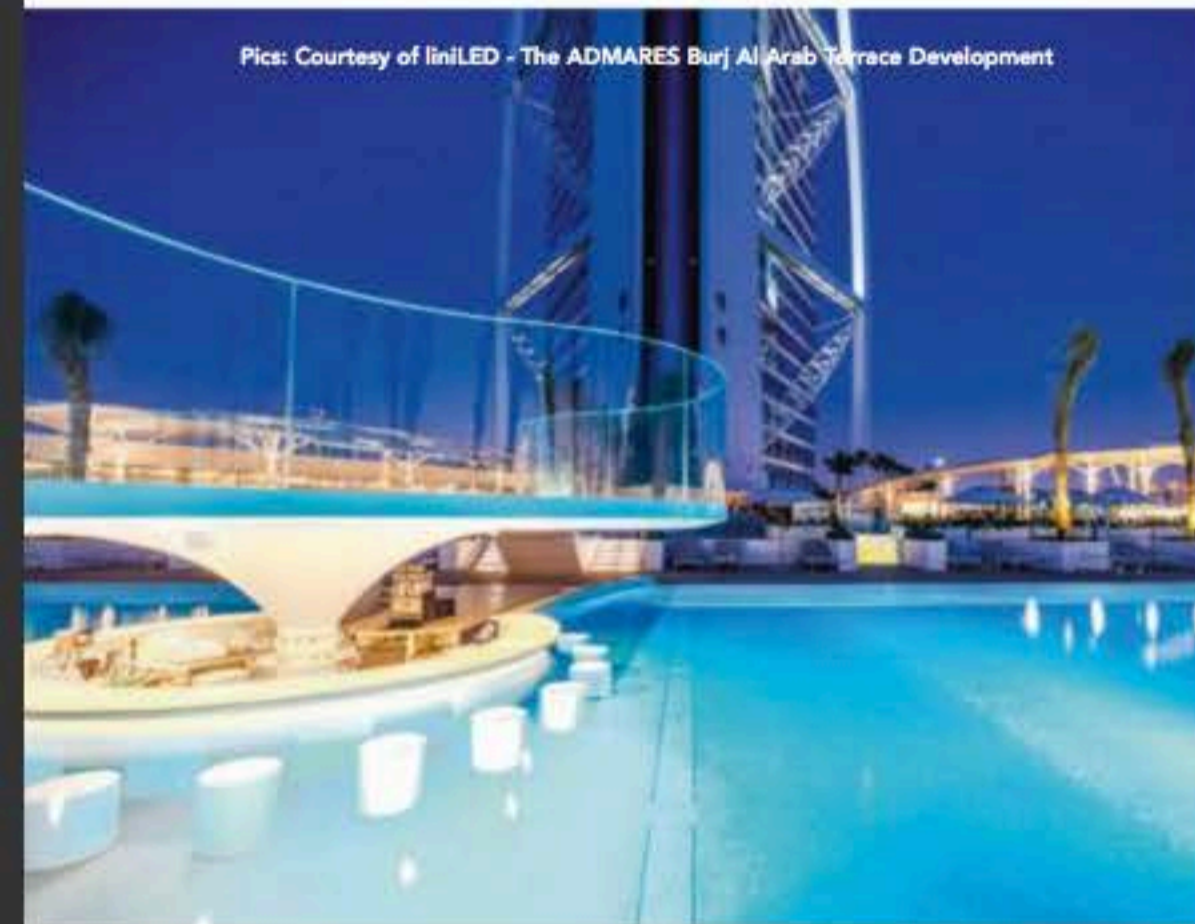
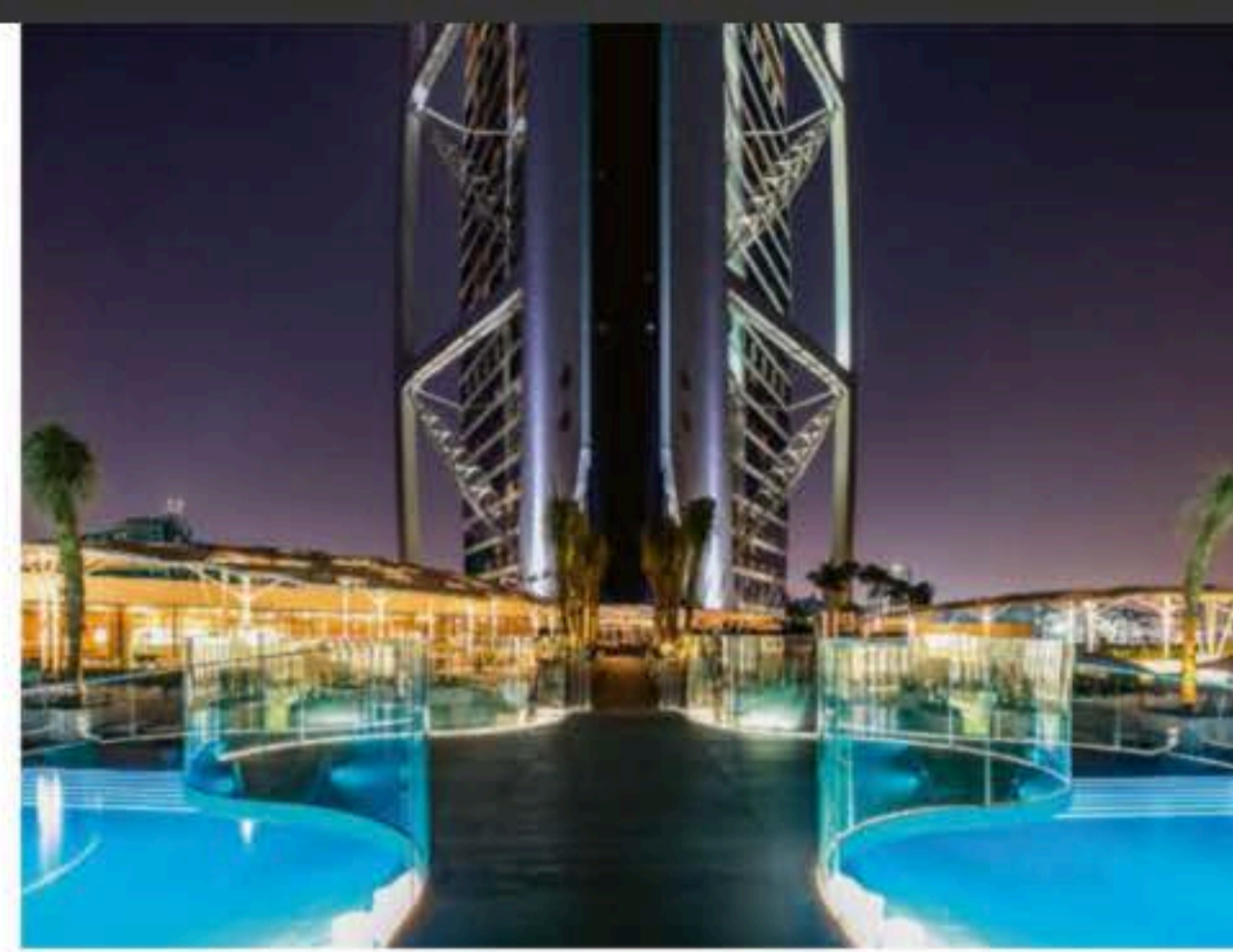
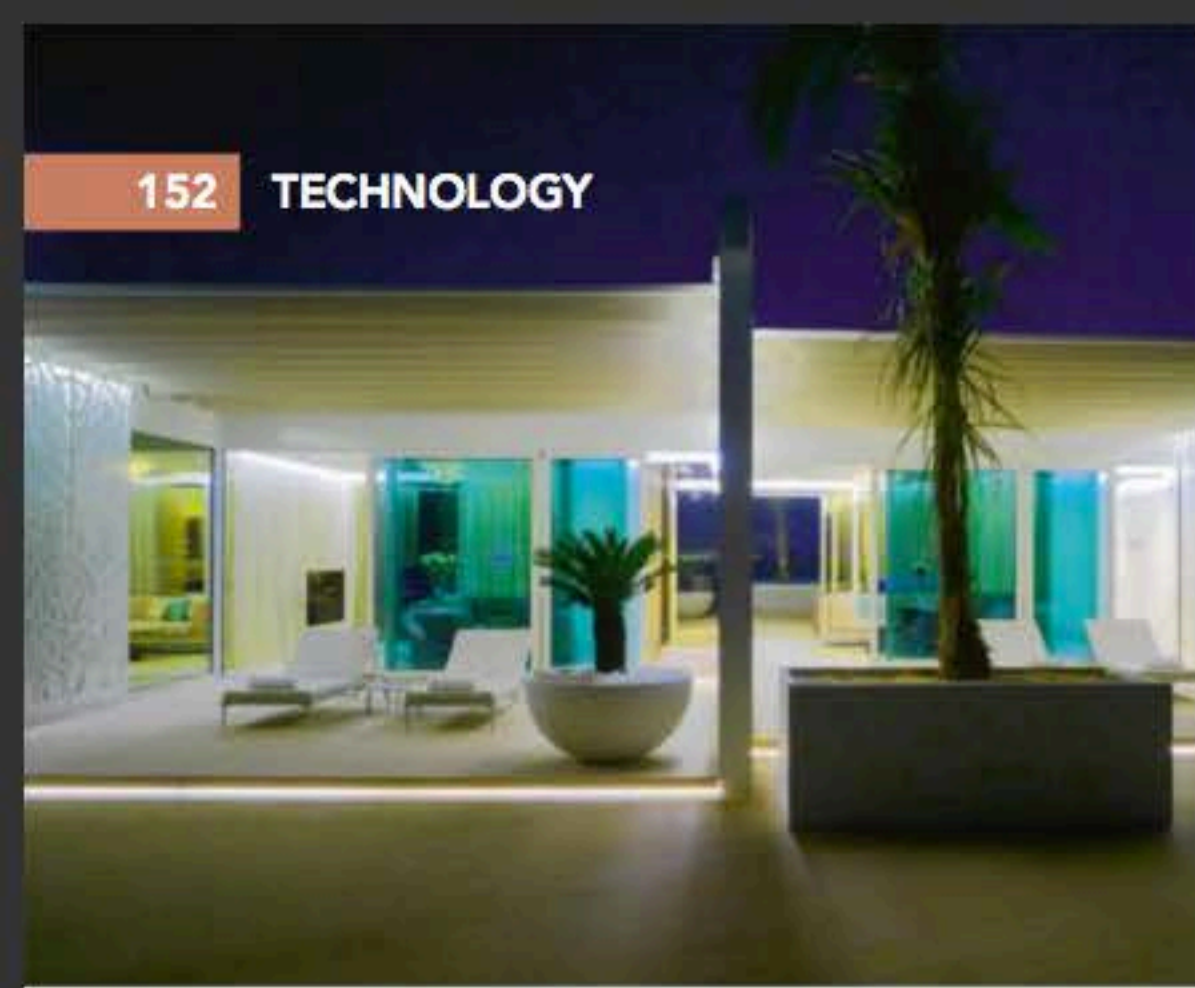
the second one, a minimalist solution with a recessed ceiling chalk frame that disappears in the built space. The Lobby is enriched by very thin lines of light of Lafina from the Professional LED Lighting collection, whose luminous cuts delineate the cement desk, simplifying the material impact. The solution adopted for the shelves is very particular: to illuminate the products on display some Ribbon Basic 5W/m LED strips have been installed, which combine functionality and aesthetics in a fascinating light and shade effect, involving all the structure. The successful mix of architecture and enlightenment works also in the small Meeting Room, where an essential and rigorous sequence of Pool, aligned with the ceiling, spreads a comfortable and soft light. Characterised by modularity, Linea Light's Paseo profiles create a continuous line in the wall and the ceiling with no visible interruptions. Versatile, Paseo solutions make great-looking effects: a narrow beam for a wall grazing result or an opaque body for a diffused light. For the outdoor flowerbed the choice fell on Clivo products, powerLED source spotlights with reduced size and high flexibility: the light emission is characterised by a minimum of 8" to a maximum of 50", thanks to the adjustable tilting bracket structure and the excellent peculiarities of the light beam. In conclusion, the lighting at IFI Group's Athens HQ is proof of Linea Light's ability to provide, in addition to cutting-edge solutions, a quality service in terms of customisation and technical support. www.linealight.com



liniLED®

Expert in high-end, innovative & tailor made LED solutions

www.liniLED.com



Pics: Courtesy of liniLED - The ADMARES Burj Al Arab Terrace Development



HEIGHT OF LUXURY

Supplying over 1.4km of various LED strips, liniLED has brought Dubai's vast Burj Al Arab Hotel Terrace to life with a variety of luminous intensities.

Set in the azure waters of the Arabian Gulf, the Burj Al Arab Terrace is a stunning 10,000m² luxury terrace that accommodates the first-class facilities of the seven star Jumeirah Burj Al Arab Hotel. The terrace includes the luxurious Scape Restaurant & Bar, 32 private cabanas (butler serviced), 400 sun loungers and a beach. To complete the design, the terrace also incorporates a 612m² freshwater pool and an 828m² saltwater infinity pool that melts into the horizon to create the mirage of a continuous ebb of water into the Arabian Gulf.

The terrace is the result of a creative marine design and ingenious engineering. Before being shipped in sections to Dubai

for the final assembly and installation, most of the design and construction of the terrace was completed in Finland. Finnish developer and construction specialist ADMARES was commissioned to deliver the turn-key project. ADMARES CEO Mikael Hedberg said: "We're immensely proud of this project. It gave us the opportunity to create a unique structure that could be installed in its final location with very little disruption to hotel guests and marine life and in a remarkably short time frame. It's an impressive feat of engineering: the off-site fabrication in Finland and subsequent installation in Dubai makes it the biggest-ever undertaking of its kind in the world." To execute its initial concept, ADMARES

collaborated with Finnish liniLED partner, Oy Hedtec Ab. They supplied approximately 1.4km of various liniLED LED strips in three luminous intensities (Deco, Power and High Power). The liniLED LED strips were installed indoor and outdoor of the Burj Al Arab Terrace with several liniLED Profiles and Power Supply Units. The new Burj Al Arab Terrace was successfully completed by ADMARES in just eleven months - with the majority of its construction completed in Finland and the assembly and outfitting being finished in only twelve weeks. The steel structure alone weighs approximately 3,000 tonnes - about half the weight of the Eiffel Tower. www.liniled.com

BE BRIGHT AND BE LIGHT

DMX BALLOON
DEDICATED TO CUSTOMIZATION
AND INNOVATION



RDT RISING DRAGON GROUP

19 Yongsheng Road, Yonghe Economic Zone Of Getd District, Guangzhou City, Guangdong, P. R. China
Tel: 020-82986986 | Fax: 020-82986198 | Michael@risingdragononline.com

